

THIS DRAWING AND THE SPECIFICATIONS CONTAINED HEREIN ARE CONFIDENTIAL AND PROPRIETARY. THEY ARE THE PROPERTY OF DIGITAL EQUIPMENT CORPORATION AND SHALL NOT BE REPRODUCED OR COPIED OR USED IN WHOLE OR IN PART AS THE BASIS FOR MANUFACTURING OR SALE OF ITEMS WITHOUT WRITTEN PERMISSION. THIS IS AN UNPUBLISHED WORK PROTECTED UNDER THE FEDERAL COPYRIGHT LAWS.

COPYRIGHT 1987

FIELD MAINTENANCE PRINT SET

TABLE OF CONTENTS

| | |
|--------------------|-----------------|
| K-DD-5416932-01 | MODULE |
| K-PL-DESTA-0-DBP | DESTA |
| D-UA-7022782-0-DBU | DESTA MAIN ASSY |
| K-PL-7022782-0-DBP | DESTA MAIN ASSY |

UNIT VARIATIONS
COVERED BY THIS
PRINT SET

DESTA-AA

FIELD MAINTENANCE PRINT SET

DIGITAL EQUIPMENT CORPORATION

PRINT SET ORDER NO .

MP-02090-01 REV B01

REVISION HISTORY

CONT. REVISION HISTORY

MADE BY : T. HUMMEL

DATE : 01-MAY-86

d i g i t a l

| REV | ECO NUMBER | DATE | REV | ECO NUMBER | DATE |
|-----|------------|------|-----|------------|------|
|-----|------------|------|-----|------------|------|

CHECKED BY : F. CAREONE

DATE : 01-MAY-86

TITLE: FIELD MAINTENANCE PRINT SET

| | | | | | |
|---|-------------|-----------|--|--|--|
| A | INITIAL | 01-MAY-86 | | | |
| E | DESTA-MK002 | 13-JAN-88 | | | |
| | | - - | | | |
| | | - - | | | |
| | | - - | | | |
| | | - - | | | |
| | | - - | | | |
| | | - - | | | |
| | | - - | | | |

PROJECT ENGR : G. GRAHAM

DATE : 01-MAY-86

DESTA

RSPBLE ENGR : R. LABICH

DATE : 01-MAY-86

SIZE | CODE | DOCUMENT NUMBER | REV.

| I. | TC | DESTA-0-1 | E

FIELD SERVICE : J.D. CORBETT

DATE : 01-MAY-86

SHEET | OF | | EDIT : |

| DRAWING NO. | NO.SHTS | PART NO. | DESCRIPTION | REVISIONS |
|--------------------|---------|------------|-----------------------|-------------|
| D-UA-5416932-0-0 | 2 | 5416932-01 | DESTA BOARD | A1 B1 C1 C2 |
| D-CS-5416932-0-1 | 1 | | DESTA | A B C D |
| K-PL-5416932-0-DBP | 2 | | DESTA | A B C C |
| K-PC-5416932-0-DBJ | | | DESTA | A B C D |
| | | 5016931-01 | P.C. DESIGN DATA BASE | H H J J |
| B-DD-5016931-0-0 | 1 | | ETCHED CIRCUIT BOARD | H1 H1 J1 J1 |
| K-DD-5016931-0-0 | 1 | | DRAWING DIRECTORY | A A B IN |
| | | | DRAWING DIRECTORY | - - - C |

NOTES:

| R E V I S I O N Y | H I S T O R Y | E C O N O | I N I T O | M L O | M L O | M K O | A | B | C | D |
|---|---------------------------------|-----------------------|-----------------------|-------------|-------------|-------------|---|---|---|---|
| | | | | | | | | | | |
| | | | | | | | | | | |
| | | | | | | | | | | |
| | | | | | | | | | | |
| | | | | | | | | | | |
| | | | | | | | | | | |
| | | | | | | | | | | |
| | | | | | | | | | | |
| | | | | | | | | | | |
| | | | | | | | | | | |
| | | | | | | | | | | |

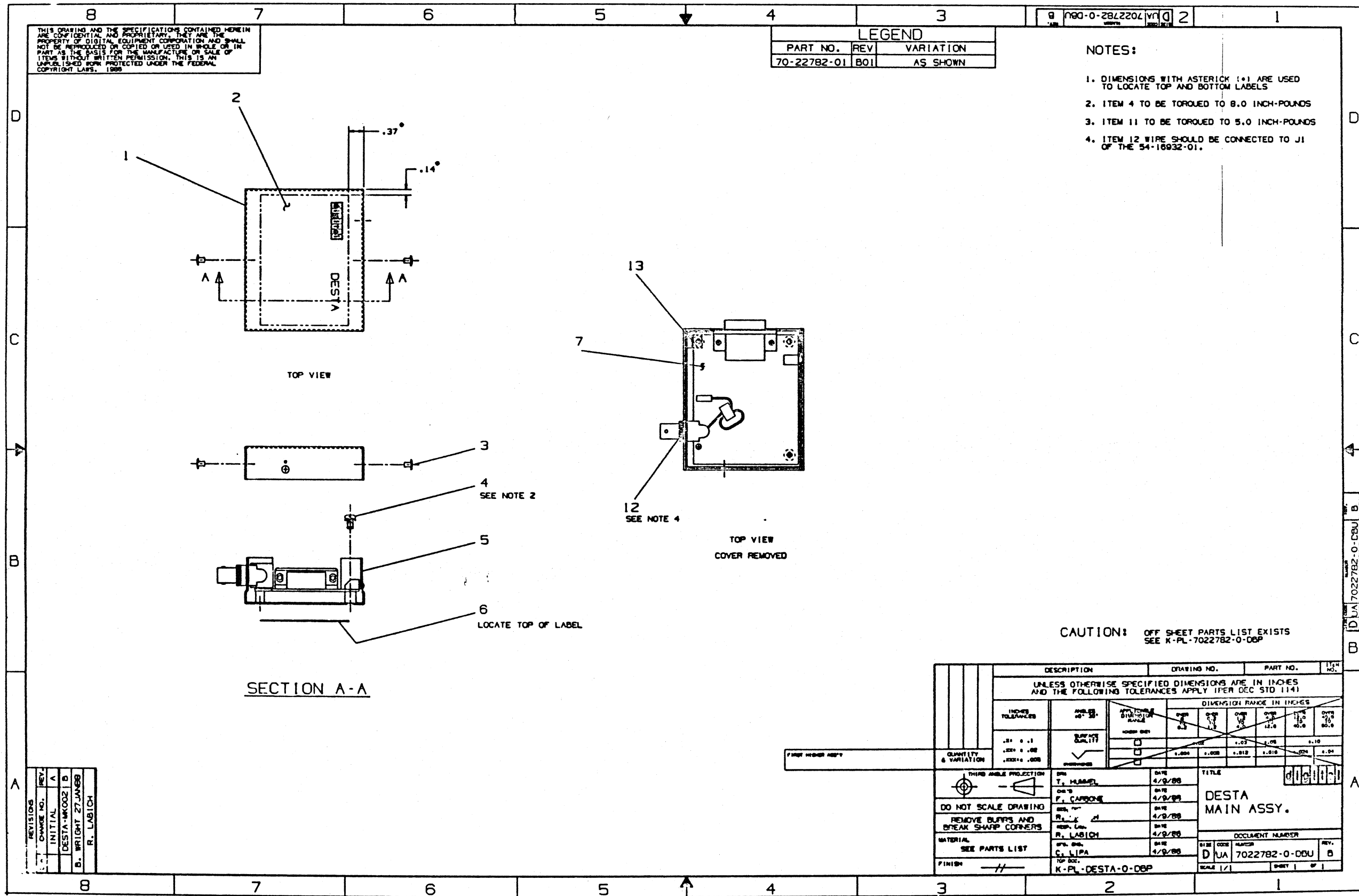
THIS DRAWING AND THE SPECIFICATIONS CONTAINED
 HEREIN ARE CONFIDENTIAL AND PROPRIETARY. THEY
 ARE THE PROPERTY OF DIGITAL EQUIPMENT CORPOR-
 ATION AND SHALL NOT BE REPRODUCED OR COPIED
 OR USED IN WHOLE OR IN PART AS THE BASIS FOR
 THE MANUFACTURE OR SALE OF ITEMS WITHOUT WRIT-
 TEN PERMISSION. THIS IS AN UNPUBLISHED WORK
 PROTECTED UNDER THE FEDERAL COPYRIGHT LAWS.
 COPYRIGHT 1987

| | | | | | | | | | |
|----------------------|-----------------|---------------------------|------|-------------|-----|-------|---|---|--|
| DRN: E. LANDRY | DATE: 22-DEC-85 | d | i | g | i | t | a | i | |
| CHK'D: B. CORMIER | DATE: 22-DEC-85 | TITLE DESTA | | | | | | | |
| DES.ENG.: R. LABICH | DATE: 22-DEC-85 | SHEET | 1 | OF | 1 | EDIT: | 3 | | |
| RESP.ENG.: R. LABICH | DATE: 19-MAY-86 | DOCUMENT NUMBER | | | | | | | |
| | | DD FILENAME: 54169320.DDF | | | | | | | |
| MFG.ENG.: CARY LIPA | DATE: 19-MAY-86 | SIZE | CODE | NUMBER | REV | | | | |
| | | K | DD | 5416932-0-0 | D | | | | |

| LINE ITEM | TOP DOCUMENT | PART NUMBER | MIN REV | DESCRIPTION | AA C2 | QUANTITY PER VARIATION/REVISION |
|-----------|--------------|--------------------|---------------|-----------------------------------|-------|---------------------------------|
| 1 | 1 | D-UA-7022782-0-DBU | 70-22782-01 B | DESTA ASSY | 1 | |
| 2 | 2 | | 12-25869-01 | TEE, COAX BNC | 1 | |
| 3 | 3 | | 37-00910-02 | PKG TRANSCEIVER DESTA CUSTOMER | REF | |
| 4 | 4 | | 12-26595-01 | VELCRO STRIP .62WDX | 1 | |
| 5 | 5 | | EK-DESTA-IN | DESTA INSTALLATION CARD | 1 | |
| 6 | 6 | | EK-CABLE-IN | THINWIRE ETHERNET CABLE CONNECTOR | 1 | |
| 7 | 7 | | EK-DESTA-CN | *** THIS ITEM IS NOT USED *** | - | |

| REVISION HISTORY | | | KPL MATRIX FORMAT SECTION A OF A | | DRN: T. HUMMEL | DIGITAL | | | | |
|------------------|-------------|-----|----------------------------------|----------------------|-----------------------|--------------------------|-------------------------------------|-------------|-----------------------|-----------|
| ENG | ECO NUMBER | REV | SECT | C // VARIATION INDEX | DATE: 16-APR-86 | TITLE | | PARTS LIST | | |
| --- | INITIAL | A | [A] | AA | CHK'D: F. CARBONE | DESTA | | | | |
| RL | DESTA-ML001 | B | [B] | | DATE: 16-APR-86 | | | | | |
| RL | DESTA-MK002 | C | [C] | | DES. ENG: G. GRAHAM | | | | | |
| RL | DESTA-MK003 | D | [D] | | DATE: 16-APR-86 | DOCUMENT NUMBER | | | | |
| | | | [E] | | RESP. ENG.: R. LABICH | SIZE | CODE | NUMBER | REV | |
| | | | [F] | | DATE: 01-MAY-86 | K | PL | DESTA-0-DBP | D | |
| | | | [H] | | MFG. ENG: C. LIPA | RELEASE DATE: 17-JUN-88 | | | | |
| | | | [J] | | DATE: 01-MAY-86 | RELEASE STATUS: RELEASED | | | | |
| | | | BASIC PART NUMBER: DESTA | | ASSEMBLY NUMBER: | | TOP DOCUMENT NUMBER: K-DD-DESTA-0-0 | | FILE NAME: DESTAD.PLS | EDIT #: 2 |

"THIS DRAWING AND THE SPECIFICATIONS CONTAINED HEREIN ARE CONFIDENTIAL AND PROPRIETARY. THEY ARE THE PROPERTY OF DIGITAL EQUIPMENT CORPORATION AND SHALL NOT BE REPRODUCED OR COPIED OR USED IN WHOLE OR IN PART AS THE BASIS FOR THE MANUFACTURE OR SALE OF ITEMS WITHOUT WRITTEN PERMISSION. THIS IS AN UNPUBLISHED WORK PROTECTED UNDER THE FEDERAL COPYRIGHT LAWS."



THIS DRAWING AND THE SPECIFICATIONS CONTAINED HEREIN ARE CONFIDENTIAL AND PROPRIETARY. THEY ARE THE PROPERTY OF DIGITAL EQUIPMENT CORPORATION AND SHALL NOT BE REPRODUCED OR COPIED OR USED IN WHOLE OR IN PART AS THE BASIS FOR THE MANUFACTURE OR SALE OF ITEMS WITHOUT WRITTEN PERMISSION. THIS IS AN UNPUBLISHED WORK PROTECTED UNDER THE FEDERAL COPYRIGHT LAWS, 1988

| LEGEND | | |
|-------------|-----|-----------|
| PART NO. | REV | VARIATION |
| 70-22782-01 | B01 | AS SHOWN |

- NOTES:
1. DIMENSIONS WITH ASTERISK (*) ARE USED TO LOCATE TOP AND BOTTOM LABELS
 2. ITEM 4 TO BE TORQUED TO 8.0 INCH-POUNDS
 3. ITEM 11 TO BE TORQUED TO 5.0 INCH-POUNDS
 4. ITEM 12 WIRE SHOULD BE CONNECTED TO J1 OF THE 54-16932-01.

CAUTION: OFF SHEET PARTS LIST EXISTS
SEE K-PL-7022782-0-DBP

| DESCRIPTION | DRAWING NO. | PART NO. | 114 NO. |
|--|----------------------------|--------------------------------------|-----------------------|
| UNLESS OTHERWISE SPECIFIED DIMENSIONS ARE IN INCHES AND THE FOLLOWING TOLERANCES APPLY (PER DEC STD 114) | | | |
| DIMENSION RANGE IN INCHES | | | |
| INCH TOLERANCES | APPLICABLE DIMENSION RANGE | OVER 0.000 | OVER 0.000 |
| .01 ± .01 | 0.000 - 0.125 | 0.125 - 1.000 | 1.000 - 4.000 |
| .002 ± .002 | 0.125 - 1.000 | 1.000 - 4.000 | 4.000 - 16.000 |
| .001 ± .001 | 1.000 - 4.000 | 4.000 - 16.000 | 16.000 - 64.000 |
| | | 16.000 - 64.000 | 64.000 - 256.000 |
| | | | 256.000 - 1024.000 |
| | | | 1024.000 - 4096.000 |
| | | | 4096.000 - 16384.000 |
| | | | 16384.000 - 65536.000 |
| QUANTITY & VARIATION | FINISH QUALITY | THIRD ANGLE PROJECTION | DATE |
| 1 | 1 | THIRD ANGLE PROJECTION | 4/9/88 |
| | | DO NOT SCALE DRAWING | DATE |
| | | REMOVE BURRS AND BREAK SHARP CORNERS | 4/9/88 |
| | | MATERIAL | DATE |
| | | SEE PARTS LIST | 4/9/88 |
| | | FINISH | DATE |
| | | | 4/9/88 |
| TITLE | | DOCUMENT NUMBER | |
| DESTA MAIN ASSY. | | D/JA 7022782-0-DBU B | |
| SCALE 1/1 | | SHEET 1 OF 1 | |

| REV. | CHARGE NO. | INITIAL |
|------|------------|------------------|
| A | | DESTA-WOOD |
| B | | WRIGHT 27 JAN 88 |
| | | R. LABICH |

| LINE | ITEM | TOP DOCUMENT | PART NUMBER | MIN REV | DESCRIPTION | QTY |
|------|------|--------------------|-------------|---------|------------------------------------|-----|
| 1 | 1 | C-IA-7433299-0-DBU | 74-33299-01 | | COVER,DESTA | 1 |
| 2 | 2 | | 36-26145-01 | | LABEL,DESTA FRONT | 1 |
| 3 | 3 | | 90-00052-01 | | RIVET,REPETITION CLINCH .12501A | 2 |
| 4 | 4 | | 90-10174-00 | | SCREW,SEMS PAN PHIL 6-32 | 3 |
| 5 | 5 | D-MD-7433411-0-DBU | 74-33411-01 | | BASE,DESTA | 1 |
| 6 | 6 | | 36-26145-02 | | LABEL,DESTA REAR | 1 |
| 7 | 7 | | 54-16932-01 | C | THINWIRE ETHERNET STATION ADAPTER | 1 |
| 8 | 8 | | 90-09026-00 | | *** THIS ITEM IS NOT USED *** | - |
| 9 | 9 | | 90-00037-05 | | *** THIS ITEM IS NOT USED *** | - |
| 10 | 10 | | 90-10563-01 | | *** THIS ITEM IS NOT USED *** | - |
| 11 | 11 | | 90-09643-02 | | *** THIS ITEM IS NOT USED *** | - |
| 12 | 12 | | 17-01669-01 | | WIRE HARN ASSY | 1 |
| 13 | 13 | | 12-28263-01 | | SHIELD,RFI/EMI PROTECTIVE W/ .1875 | 1 |

| REVISION HISTORY | | KPL MATRIX FORMAT | | SECTION A OF A | | ORN: T. HUMMEL | | DIGITAL | |
|--------------------|-------------|--------------------|-------------------------|----------------------|------------|----------------|--|--------------------------|------|
| ENG | ECO NUMBER | REV | SECTION/VARIATION INDEX | | DATE | 14-APR-86 | | | |
| --- | INITIAL | A | (A) | 01 | CHK'D: | F. CARONE | | TITLE PARTS LIST | |
| RL | DESTA-MK002 | B | (B) | | DATE: | 14-APR-86 | | DESTA | |
| | | | (C) | | DES.ENG: | R. LABICH | | MAIN ASSY. | |
| | | | (D) | | DATE: | 01-MAY-86 | | DOCUMENT NUMBER | |
| | | | (E) | | RESP.ENG.: | R. LABICH | | SIZE | CODE |
| | | | (F) | | DATE: | 14-APR-86 | | K | PL |
| | | | (H) | | MFG.ENG.: | C. LIPA | | 7022732-0-DBP | |
| | | | (J) | | DATE: | 01-MAY-86 | | 8 | |
| | | | | | | | | RELEASE DATE: 10-FEB-88 | |
| | | | | | | | | RELEASE STATUS: RELEASED | |
| BASIC PART NUMBER: | | ASSEMBLY NUMBER: | | TOP DOCUMENT NUMBER: | | FILE NAME: | | EDIT # | |
| 7022782 | | D-UA-7022732-0-DBU | | K-PL-DESTA-0-DBP | | 7022732B.PLS | | 4 | |

"THIS DRAWING AND THE SPECIFICATIONS CONTAINED HEREIN ARE CONFIDENTIAL AND PROPRIETARY. THEY ARE THE PROPERTY OF DIGITAL EQUIPMENT CORPORATION AND SHALL NOT BE REPRODUCED OR COPIED OR USED IN WHOLE OR IN PART AS THE BASIS FOR THE MANUFACTURE OR SALE OF ITEMS WITHOUT WRITTEN PERMISSION. THIS IS AN UNPUBLISHED WORK PROTECTED UNDER THE FEDERAL COPYRIGHT LAWS."